



FineTest

www.finetest.com

Custom Cabinets and Accessories



Functional ATE & Power Supply Testers



Military and Aerospace Test Systems

Functional ATE Systems

Power Supply Test Systems

Hi-Pot Test Systems

ESS / Burn-In / Vibration Monitoring Systems

Manual Test Systems

Test Fixtures and ITAs

Box Builds and Sub-Assemblies

Switching and I/O Cards

Custom Cabinets and Accessories



FineTest 1 Industry Drive, Palm Coast, FL 32137 Tel: (386) 569-6189 Fax: (386) 446-0463 email: sales@finetest.com

CopyRight (c) 2016 FineTest Inc. All Rights Reserved

Click URL to go to: www.finetest.com

Functional ATE & Power Supply Test Systems



FineTest 1 Industry Drive, Palm Coast, FL 32137 Tel: (386) 446-0463 Fax: (386) 446-0465 email: sales@finetest.com

Custom Cabinets and Accessories

Most off the shelf Rack Cabinets are designed specifically for Computer Server or Rack-Mount only applications.

However, many instruments and parts used in ATEs today are available in DIN rail mount and form factors other than the standard 19" rack-mount.

To allow quick and easy mounting of these instruments and parts in an ATE, we have identified a need for custom and semi-custom Rack Cabinets designed specifically for ATE applications.

Our main innovation is the addition of cabinet extensions on the right, left or both sides of the standard 19" Cabinet.

Another innovation is the use of the cabinet side panels as hinged doors to access the equipment mounted in the extensions.



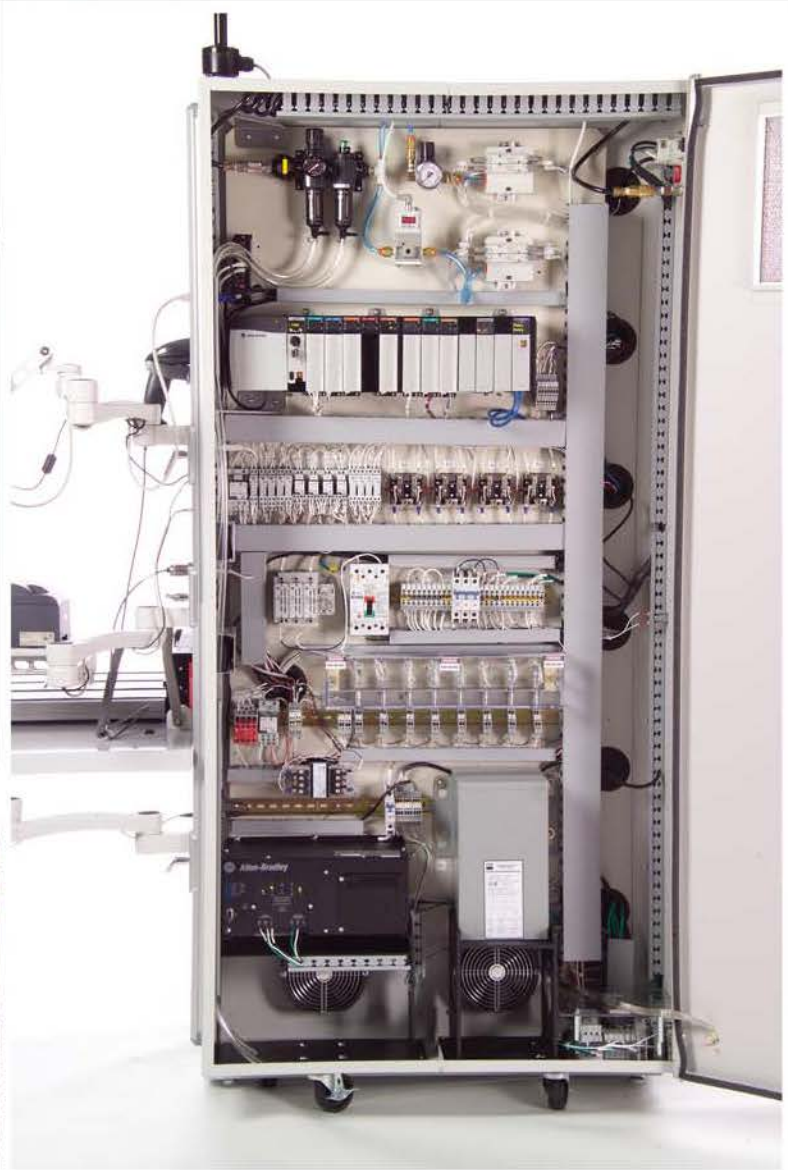
Example of FineTest ATE using 10" Right-Hand Extension

Custom Cabinets and Rackmount Accessories



Front view of an ATE with 10" Right-Hand Extension

The 10" extension allows mounting of Monitor/Keyboard Arms, Printers, Bar-Code Readers, and other equipment on the front of the rack as needed.



Side view with Cabinet Extension Side Door Open allowing easy access to all of the components mounted on the mounting plate including the Programmable Automation Controller, Pneumatic Controllers and Solenoid Valves, UPS, Transformer, Relays, Circuit Breakers, Fans, wire ducts, and cable feed-through holes etc.



Monitor Arm with Touch-Screen LCD and Keyboard Arm allows easy control of the system while working inside the extension

Example of FineTest ATE using 10" Left-Hand Extension

Custom Cabinets and Rackmount Accessories



Front view of an ATE with 10" Left-Hand Extension

The 10" extension allows mounting of Status Lamps, Circuit Breakers, and Switches freeing up more of the 19" rackmount space for additional 19" Test Instruments.



Custom Cabinets and Rackmount Accessories

Cabinet Extension Rear Panel is also used for UUT Cable Connectors, Thermocouple Connector, AC Input, USB and other miscellaneous connectors.

Side view with Cabinet Extension Side Door Open allowing easy access to all of the components mounted on the mounting plate including the Communication PC Boards, Voltage Monitor Relay, Contactors, Thermocouple Measurement, Relays, Transformer, wire ducts and cabling etc.



Example of FineTest ATE using 10" Extensions on Both Sides

Custom Cabinets and Rackmount Accessories



Front view of an ATE with 10" Extension on Both Sides

The 10" extensions allow mounting of Monitor/Keyboard Arm and Air-Intake Fans on the front of the system freeing up more of the 19" rackmount space for additional 19" Test Instruments.



Custom Cabinets and Rackmount Accessories

Right-Side Cabinet Extension Open showing over 100 DIN Rail Relays, Relay Drive PCBs, High Power Resistors, Exhaust Fans, Power Supplies, etc.



Left-Side Cabinet Extension Open showing over 100 Power Resistors, DIN Rail Relays, Relay Driver PCBs, Exhaust Fans, Power Supplies, etc.

 **FineTest**
www.finetest.com

Example of FineTest ATE using 5" Right-Hand Extension

Custom Cabinets and Rackmount Accessories



5" extension allows mounting of Monitor/Keyboard Arm on the front of the system freeing up more of the 19" rackmount space for additional 19" Test Instruments.



Front view of 3 ATEs with 5" Right-Hand Side Extensions



*Right-Side Cabinet Extension Open
showing over 100 DIN Rail Relays,
Relay Drive PCBs, Resistors,
High Power Relays, etc.*

*Left-Side Cabinet Extension Open
showing High Power Relays,
DIN Rail Relays, Terminal Blocks, etc.*



Example of FineTest ATE using 10" Right-Hand Extension

Custom Cabinets and Rackmount Accessories



Front view of an ATE with 10" Right-Hand Extension

The 10" extension allows mounting of Panel Meters, Virginia Panel Interface, Circuit Breakers and Lamps.



*Side view with Cabinet Extension Side Door Open
allowing easy access to all of the components
mounted on the mounting plate including the
Bus Bars, High Power Resistors, High Power Relays
DIN Rail Relays, Circuit Boards, Power Supplies,
Shunts, Fans, wire ducts and cabling etc.*

Example of FineTest ATE using 3" Extension on Both Sides

Custom Cabinets and Rackmount Accessories



Front view of an ATE with Dual 3" Extensions

The 3" extensions allow mounting
Relay and Matrix Switching Cards on Both Sides



*Side view with Left Extension Open
allowing easy access to all of the
Switching Matrix Cards, HF Relays,
Power Supplies, Relay Drivers etc*

*Side view with Right Extension Open
allowing easy access to Relay Cards*



FineTest Custom Cabinet with Left-Hand Side 10" Extension

Custom Cabinets and Rackmount Accessories



Fan Hole

10" Extension

Anti-Tilt Bar

Front view of FineTest Custom Cabinet
with Left-Hand Side 10" Extension

Rear Door with Lock

Air Vent

6U Panel for Input Power Connectors

Heavy Duty Locking Casters

10" Extension



Rear view of FineTest Custom Cabinet with Left-Hand Side 10" Extension

FineTest Custom Cabinet with Left-Hand Side 10" Extension

Custom Cabinets and Rackmount Accessories



*Rear view of FineTest Custom Cabinet
with Back Door and Side Doors Open
Sides can be hinged in front or rear*



Upper Removable Mounting Plate

Lower Removable Mounting Plate

GND Connection on Cabinet Frame

GND Connection on Removable Side Door

Side view with Extension Side Open

FineTest Custom Cabinet with Left-Hand Side 10" Extension

Custom Cabinets and Rackmount Accessories



Front Angle View



Rear Angle View



Close-Up of
Anti-Tilt Bar Extended



Anti-Tilt Bar
Extended



Accessories



FineTest Cabinets are available with many accessories pre-installed or ordered separately including:

- 1.5"x1.5" Heavy Duty Equipment Mounting Rails
- 1.5"x3" Wide Heavy Duty Equipment Mounting Rails
- Heavy Duty Mounting Rail Cross Panels in Multiple Sizes
- Custom Name-Plates for the top of the cabinet with your logo
- 19" Blank Panels in 1U, 2U, 3U, 4U... or custom
- 19" Custom Panels with Cutouts and SilkScreen
- 1U (3" or 4.5" deep) Rack-Mount Shelves
- 1U 24"x24" Rack-Mount Tables



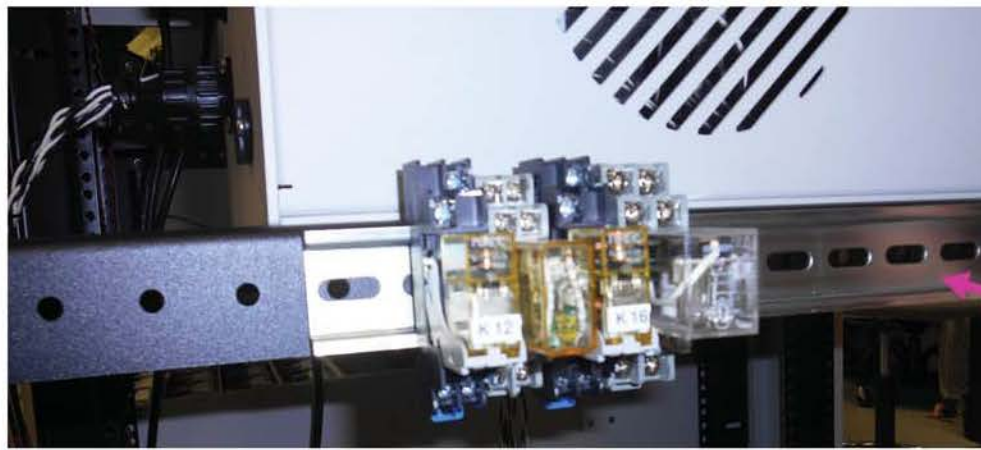
Equipment Mounting Rail

1.5" H x 1.5" W x 25" L

Custom Cabinets and Rackmount Accessories



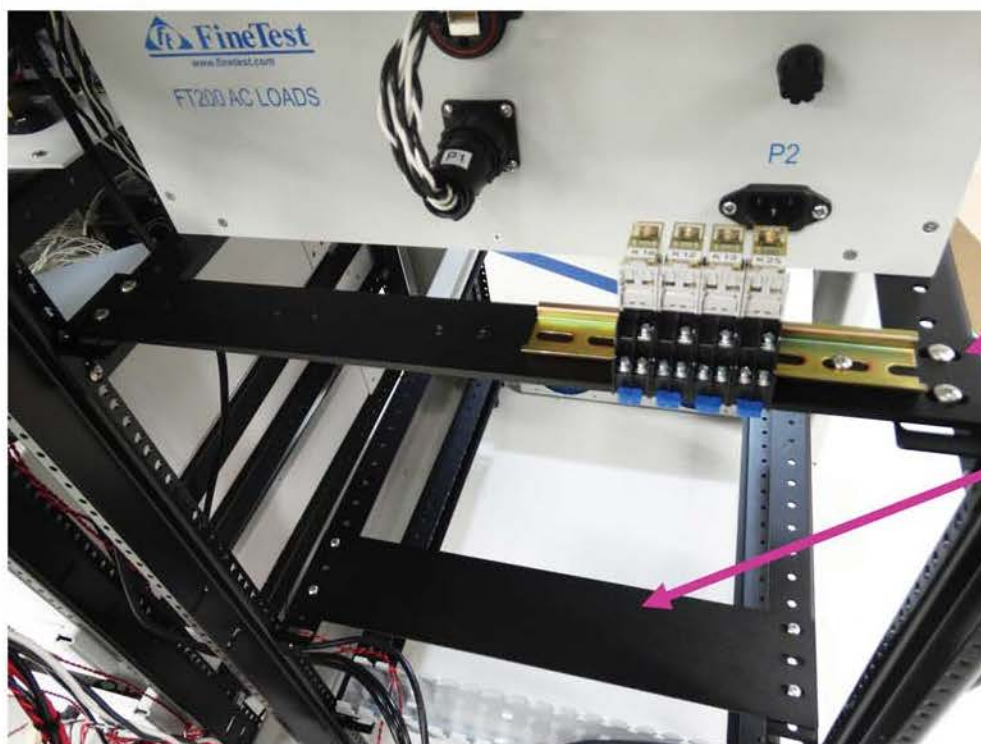
1.5" high x 1.5" wide x 25" long
0.75" Mounting slots (24" center to center)
Black Powder Coat, 18 Gauge Steel
24 10-32 Holes ,1" apart, on both sides for
DIN Rail mounting, Tie-Wraps, Cross Plates etc.



1" spaced holes
can be used to mount
DIN Rails



1" spaced holes
can be used
for Tie-Wraps



1" spaced holes
can be used to mount
Cross Plates
from Rail to Rail

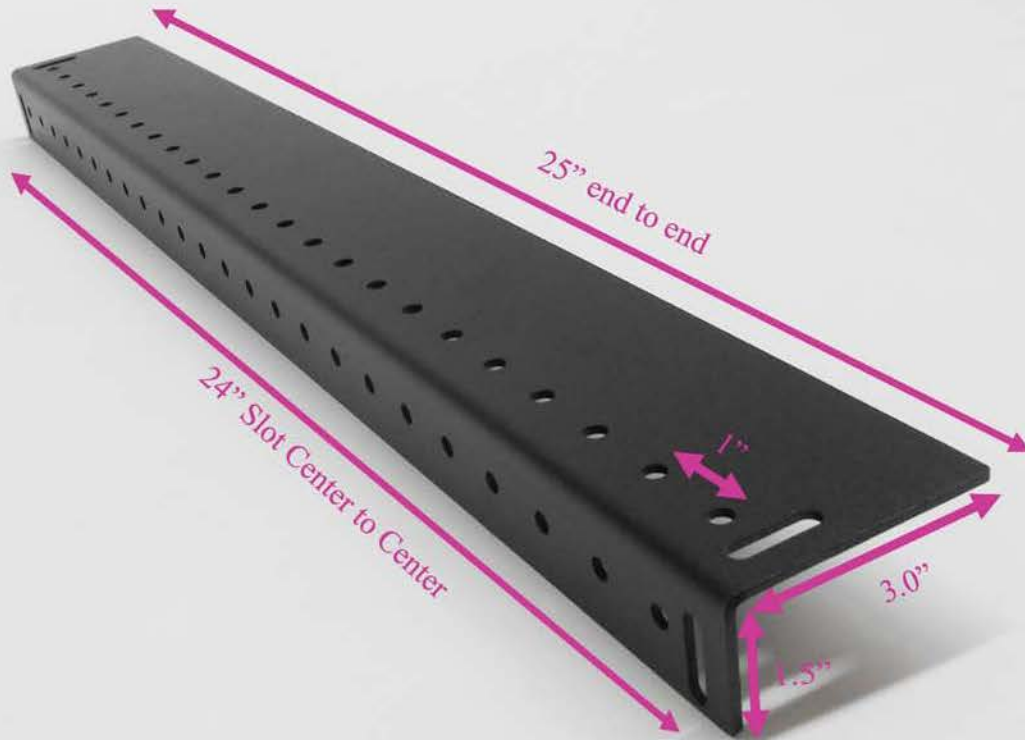
Custom Cabinets and Rackmount Accessories

 **FineTest**
www.finetest.com

Equipment Wide Mounting Rail

1.5" H x 3.0" W x 25" L

Custom Cabinets and Rackmount Accessories



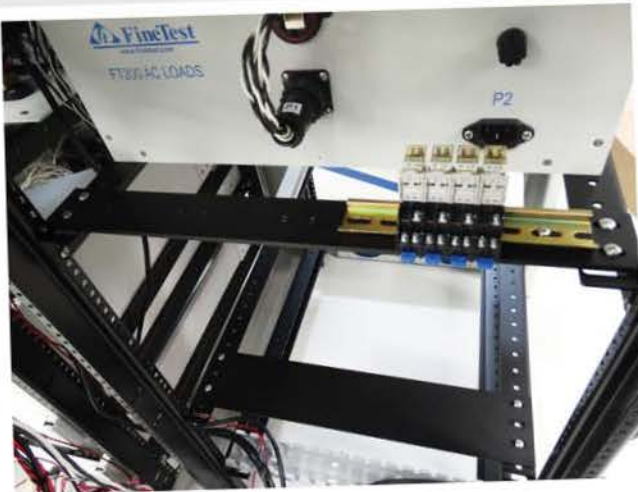
1.5" high x 3.0" wide x 25" long
0.75" Mounting slots (24" center to center)
Black Powder Coat, 18 Gauge Steel
24 10-32 Holes ,1" apart, on both sides for
DIN Rail mounting, Tie-Wraps, Cross Plates etc.

Cross Plates for Mounting Rails Multiple Sizes

Custom Cabinets and Rackmount Accessories



17.75" wide and depths of 1U, 2U up to 11U (20")
Black Powder Coat, 18 Gauge Steel



Cross Plates can be used for various parts mounting including DIN rails



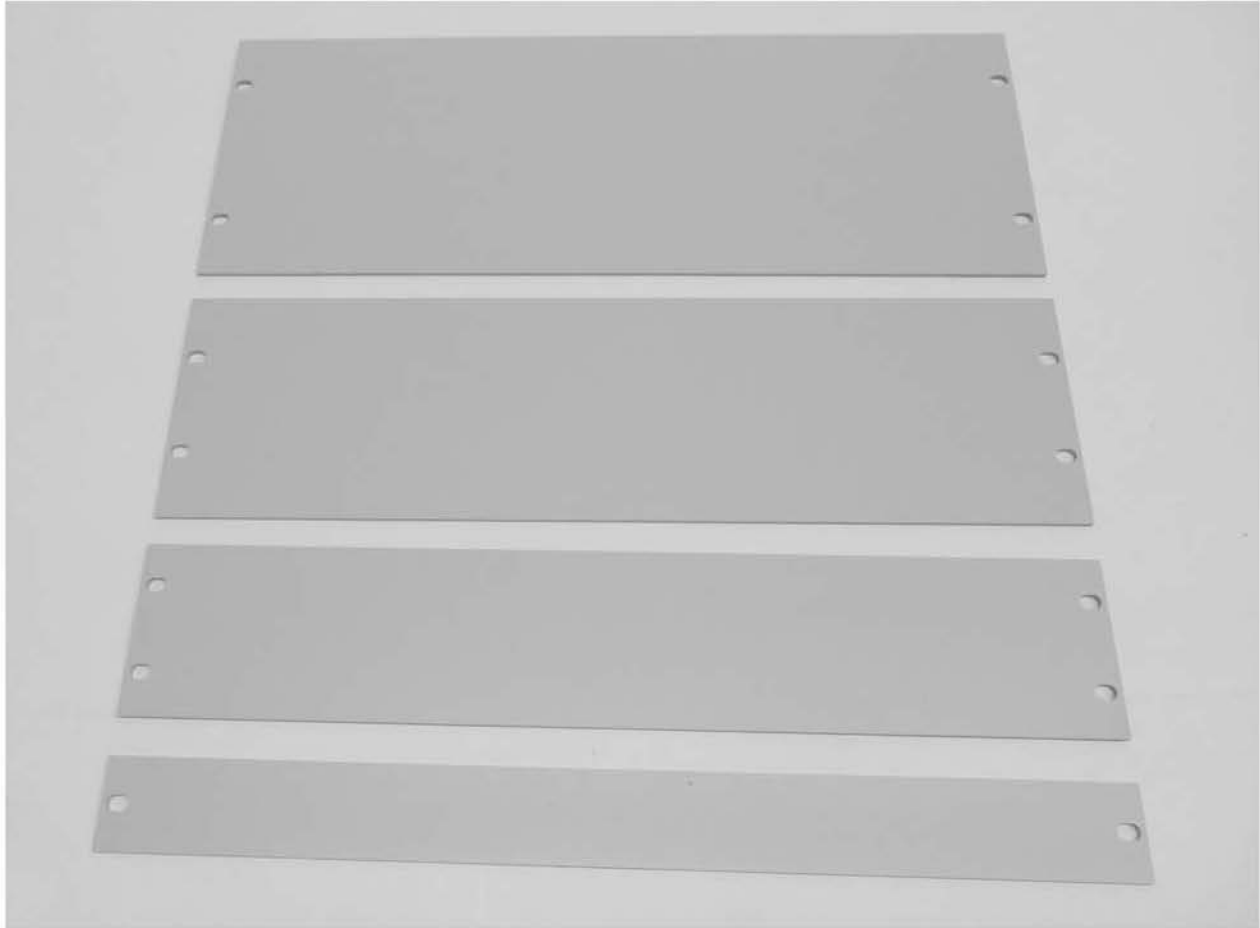
1" spaced holes
used for mounting
Cross Plates to Rails

 **FineTest**
www.finetest.com

Standard Blank Panels

1U, 2U, 3U, 4U

Custom Cabinets and Rackmount Accessories



19" Rack-Mount Standard Blank Filler Panels
Light Grey Powder Coat, Steel or Aluminum
Available in any size 1U, 2U, 3U, 4U etc.

Custom Cutouts and Silkscreen 19" Panels in Multiple Sizes

Custom Cabinets and Rackmount Accessories



19" Standard 1U, 2U, 3U, 4U...with Custom Cutouts and Silkscreen
Any Color in Steel or Aluminum



6U Custom Panel for AC Input



2U Custom Panel with Hinges

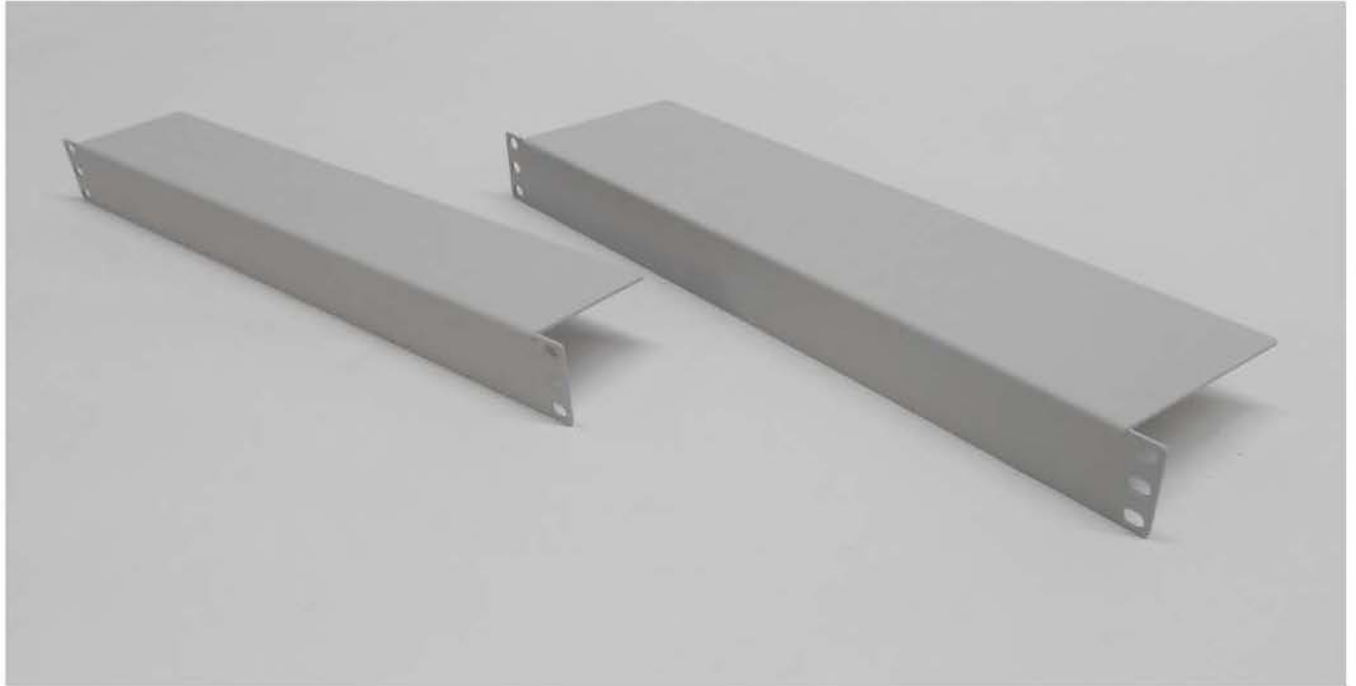


4U Custom Panel with many Connectors



1U 19" Rack-Mount Shelves 3" and 4.5" Deep

Custom Cabinets and Rackmount Accessories



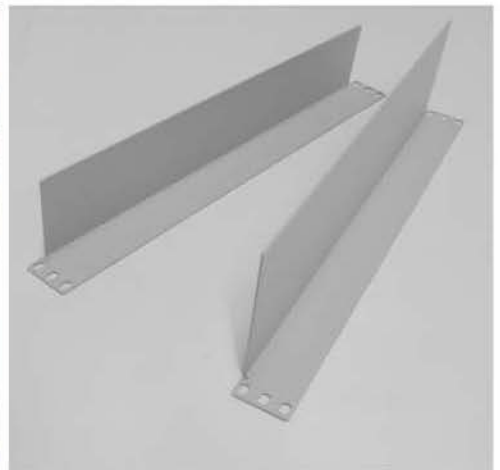
1U 19" Rack-Mount Shelves 3" or 4.5" Deep

Light Grey Powder Coat, 14 Gauge Steel

Can be used for mounting parts, as an Air Plenum, etc.



Shelves can be mounted in either direction as shown



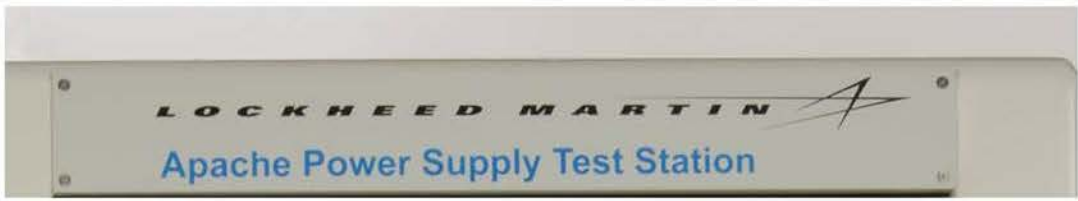
Angle View of Shelves

Custom Logo Name-Plates for Front Top Of Cabinet

Custom Cabinets and Rackmount Accessories



Your Company Logo and/or Project Name for the front of the Cabinet



Sample Customer Logo and Project Name-Plates



1U 19" Rack-Mount Tables 24" x 24" Table Top

Custom Cabinets and Rackmount Accessories



System with two Tables installed

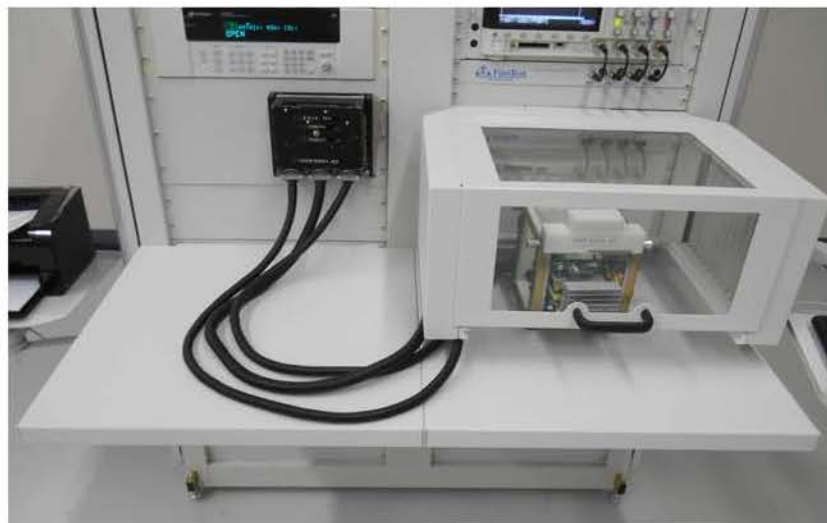


Duplicate Systems with one Table Installed

1U 19" Rack-Mount Tables with 24"x24" Table Tops

Light Grey Powder Coat (any color on request)

Rails 11 Gauge Steel, Tops 13 Gauge Steel



Another System with two Tables installed



Top View of Table with mounting Rails



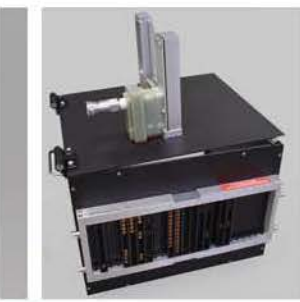
Bottom View of Table with mounting Rails



Bottom View of Table installed in a Cabinet



*Rails and Filler Panel Installed in a Cabinet
without a Table Top*



FineTest Production Floor

FineTest Building at 1 Industry Drive



FineTest

www.finetest.com



FineTest 1 Industry Drive, Palm Coast, FL 32137 Tel: (386) 446-0463 Fax: (386) 446-0465 email: sales@finetest.com